

POC SOFTWARE SCS-PTC-T



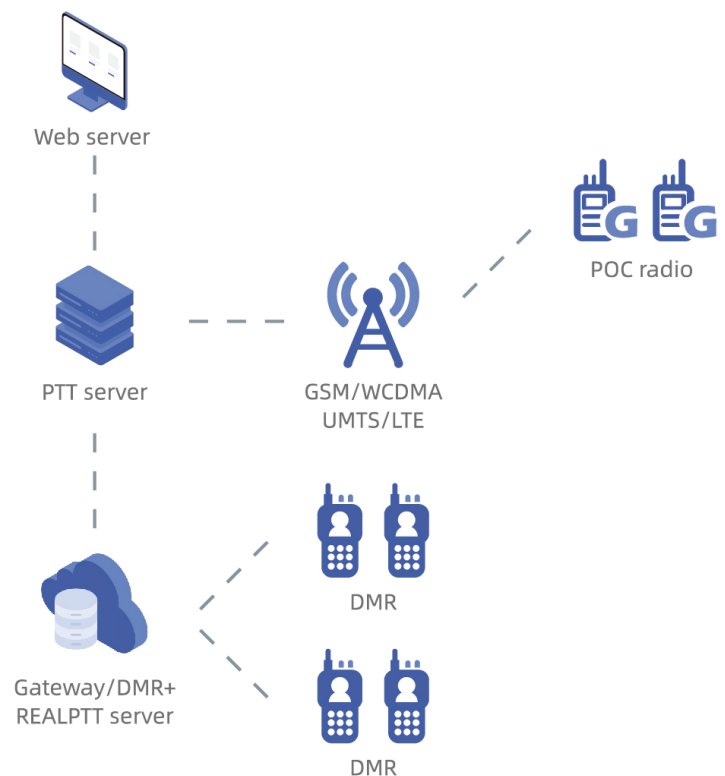
Product Introduction

SCS-PTC-T solution is a multimedia system based on wireless data network realized by VoIP technology. It is different from traditional two way radios. It has no distance limitations and can be used wherever there is cellular network. The system can easily realize real-time PTT call functions globally. The system is powerful, easy to use, simple to install, and with low cost.

Working Principal

SCS-PTC-T platform radio should use internet. It works with mobile sim card or wifi as well as LTE4G/UMTS/WCDMA 3G/ GSM 2G instead of VHF/UHF frequency.

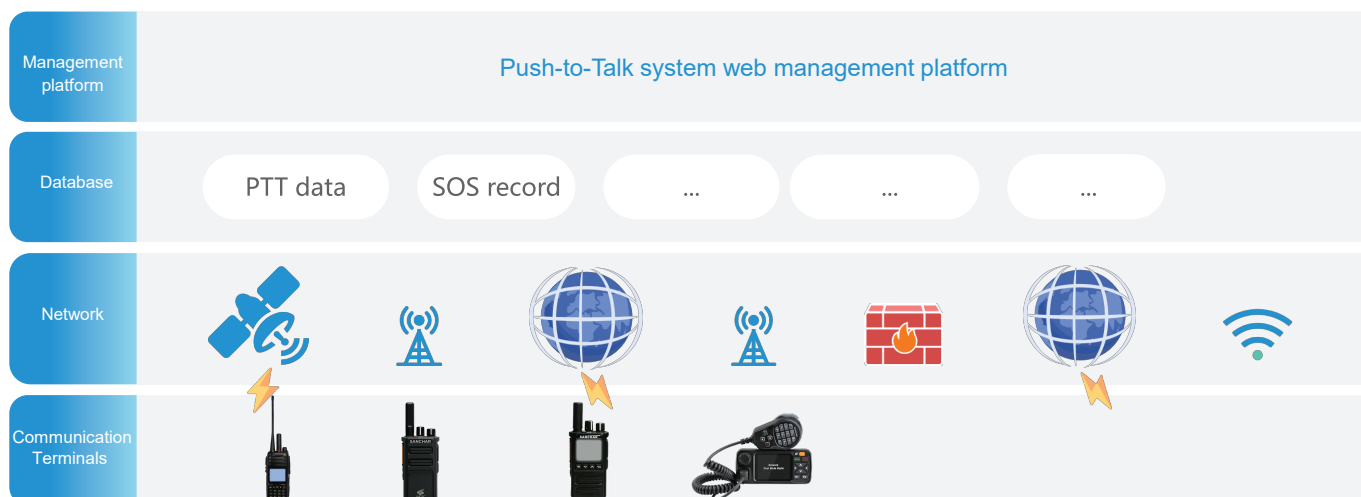
The SIM card POC radio or wifi radio is like your mobile phone. It can talk anywhere at any time if network is covered.



MAKE IN INDIA



System Structure



System Web Management Platform

- Multi groups creation for users
- Users Creation
- Hierarchical privileges
- Online/Offline Status check
- Kill/Unkill
- Users and account details

MANAGEMENT PLATFORM

Micro Server Management / Micro Server Group List

Group ID: Group Name: Search Reset Add Delete

Group ID	Group Name	Create Time	Remark	Action
100013	channel_5	2024-1-25		Modify Delete
100012	channel_4	2024-1-25		Modify Delete
100011	channel_1	2024-1-25		Modify Delete
100010	channel_2	2024-1-25		Modify Delete
100006	channel_3	2024-1-5		Modify Delete

Total 5 items 1 10 / page

Group List

Device Features

- PTT Call
- Private Call
- Group Call
- SOS
- Stun/Revive
- RSA/AES Encryption

MANAGEMENT PLATFORM

Micro Server Management / Micro Server User List

Account Search Reset

+ Add - Delete Resume Suspend Subscribers: 5 Online users: 0

Online/Offline	Account	Name	Pass...	Type	Default Gr...	Status	Valid Per...	Remark	Action
Offline	SC30224...	SC3_2	111111	Basic account	channel_3	Resu...	2025-01...		Details Modify Renew Delete
Offline	gpi111	SC3_A	111111	Basic account	channel_3	Resu...	2025-01...		Details Modify Renew Delete
Offline	DISP0001	Dispatche...	111111	Dispatch acc...	channel_3	Resu...	2124-01...		Details Modify Renew Delete
Offline	test0001	Device_A	111111	Basic account	channel_3	Resu...	2025-01...		Details Modify Renew Delete

User List

MANAGEMENT PLATFORM

Micro Server Management / Micro Server User List

Account Search Reset

+ Add - Delete Resume Suspend Subscribers: 5 Online users: 0

Online/Offline	Account	Name	Pass...	Type	Default Gr...	Status	Valid Per...	Remark	Action
Offline	SC30224...	SC3_2	111111	Basic account	channel_3	Resu...	2025-01...		Details Modify Renew Delete
Offline	gpi111	SC3_A	111111	Basic account	channel_3	Resu...	2025-01...		Details Modify Renew Delete
Offline	DISP0001	Dispatche...	111111	Dispatch acc...	channel_3	Resu...	2124-01...		Details Modify Renew Delete
Offline	test0001	Device_A	111111	Basic account	channel_3	Resu...	2025-01...		Details Modify Renew Delete

Function list

Function	Valid Period
call	Valid Period: 2124-1-5
px	Valid Period: 2124-1-5
video	Valid Period: 2124-1-5

Online/Offline status



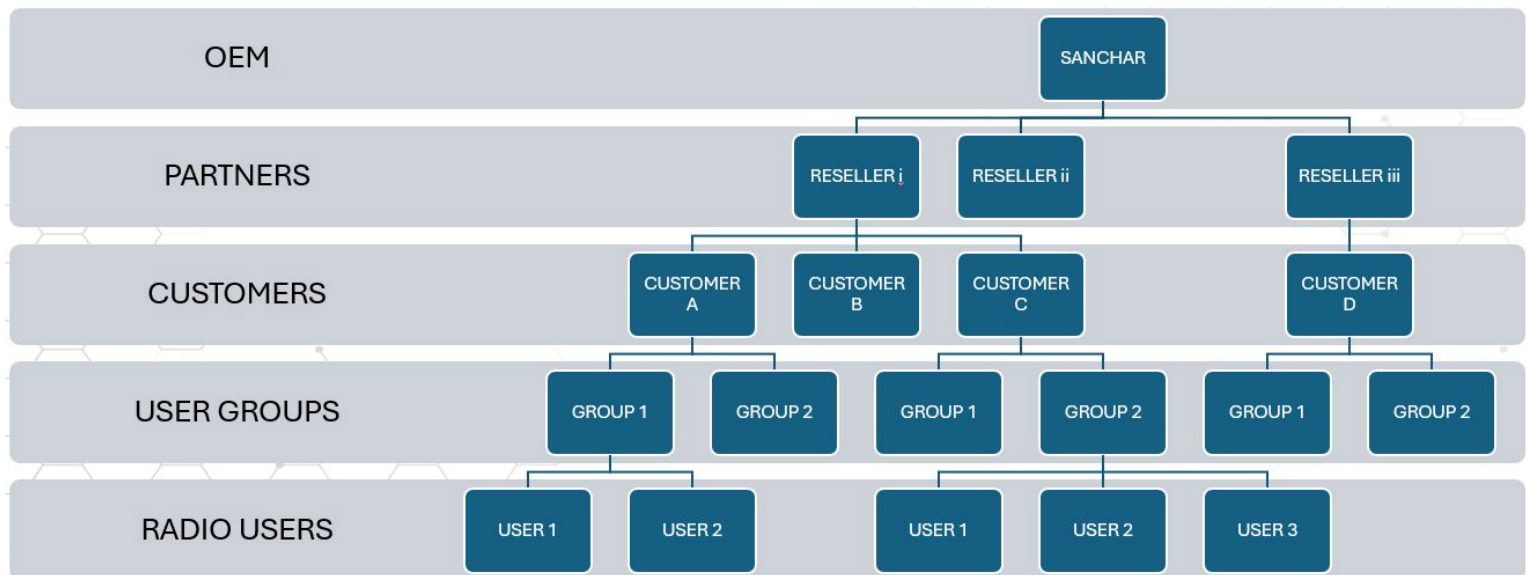
MAKE IN INDIA



System Web Management Platform

Multi-level management

SCS-PTC-T management platform adopts a hierarchy mode where users and groups can be managed on the WEB.



Platform Deployment Options

A

Sanchar Cloud Server Solution

Considering the concerns of industry customers regarding public network system security, confidentiality and network stability, Sanchar offers cloud servers service which customers can utilize as a SAAS. Benefits include Sanchar cloud server - Cost Effectiveness, Over the Air Features Customization, Uptime as per SLA, User based Scalability, Quick Deployment, Technical Maintenance Support, No Capital Upfront Infrastructural Cost.

B

On-premise Server Solution

The independent deployment is also called the on-premise server solution, which means the entire system software is deployed on the server specified by the customer. Customer can choose to deployment platform on their servers. Benefits include in house server - Complete Control, Security and Ownership, Less Dependency on External Providers, Operational Cost Saving.



MAKE IN INDIA